



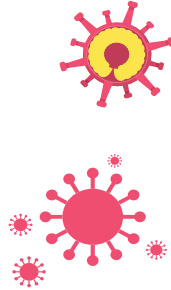
# Pennsylvania Findings on Health Centers' Response to COVID-19

## Week of June 4, 2021\*

\*Data represents information provided by health centers from a single, specified reporting date. Summary information across report dates is not comparable due to differences in which health centers responded for a given report date.

### Pennsylvania's FQHCs continue to adapt to meet the testing needs of their communities.

To learn how community health centers (FQHCs) are responding to the COVID-19 pandemic and the impact the pandemic is having on FQHCs, Pennsylvania FQHCs respond to weekly surveys conducted by the Health Resources and Services Administration (HRSA). These findings illustrate a point-in-time snapshot and cumulative to date data of an unprecedented and evolving situation.



### During the week of June 4, Pennsylvania FQHCs had:

**1,404** patients tested for COVID-19

**83** patients test positive <sup>1</sup>

**2,201** COVID-19 immunization series initiated

**3,866** COVID-19 immunization series completed

### Cumulative Data for Pennsylvania FQHCs:

**42,117** patients tested for COVID-19 to date

**37,562** patients test positive to date <sup>1</sup>

**157,583** COVID-19 immunization series initiated to date

**141,978** COVID-19 immunization series completed to date

**6** health center sites temporarily closed due to COVID-19



Health center weekly visits are down by 19% <sup>3</sup>



**22%** of health center visits conducted virtually

Source: Data presented in this fact sheet come from the Bureau of Primary Health Care, Health Resources and Services Administration, Health Center COVID-19 Data Collection Survey administered on June 4, 2021, 1,094 (79%) of federally-funded health centers responded. For more information, please visit <https://bphc.hrsa.gov/emergency-response/coronavirus-health-center-data>.

1. Includes all positive patients regardless of where they were tested

2. Due to staff exposure, school closure, lack of child care, site/service closure, and other reasons.

3. Visits refers to all visits regardless of service type (e.g. medical, dental, behavioral health, etc.), including virtual visits